

## CALENDAR 2020-2021

- Closed Monday 7th June-Public Holiday
- Closing Wednesday 30th June 2021 at 12.15pm. Summer Holidays

## CALENDAR 2021-2022

- Croke Park Planning Day for teachers, Tuesday, 31st August 2021
- School Re-opens for pupils, Wednesday, 1st September 2021.
- October Mid-term Break: Closed Monday 25th October to Friday 29th October 2021 inclusive.
- Christmas Holidays: Closing Wednesday, 22nd December 2021 at 12.15 p.m. and re-opening Thursday, 6th January 2022.
- February 2022 Mid-term Break: Closed Monday 21st February 2022 to Friday 25th February 2022
  - Closed Wednesday, 17th March 2022- Public Holiday.
- Easter 2022: School closing Friday, 8th April 2022 at 12.15 p.m. and reopening Monday, 25th April 2022.
  - Closed Monday, 2nd May 2022-Public Holiday.
  - Closed Friday, 3rd June 2022
  - Closed Monday, 6th June 2022-Public Holiday.
  - Closing Thursday, 30th June 2022 at 12.15 p.m.

## **The Monster Raffle**

The annual Scoil Íde Monster Raffle will take place on Thursday 10th June. Unfortunately we were unable to hold the raffle as anticipated last year but we have kept all ticket stubs which we will also include in this year's draw.

In order to make the draw as safe as possible we have changed the format. It will now be run as a family draw where families wishing to enter the draw can pay €10 for one family entry, €15 for two family entries and €20 for three family entries. Money will be payable through an Aladdin text link which has been sent out by the school office.

Scoil Íde would like to thank Mugal's Service Station for sponsoring the draw. We would also like to thank local artist Dave Cassidy for donating one of his incredible Batman prints. Prizes include a 128gb i-Pad, a bike, a basketball and hoop set, Lego Technic and an art set.



## **Parents' Survey**

We have just over 6 and a half weeks left until we close for the summer holidays. It has been a difficult year for many of us as COVID has changed the way we live our lives. Despite the challenges posed by the pandemic, we have worked together to ensure that both in-school and remote learning worked as well as possible. For that, I sincerely thank you.

I have attached a link to a questionnaire which parents can complete if they would like to send in feedback related to the way the school has dealt with COVID-19. Click on the link below to access this questionnaire

<https://forms.gle/VHuR1rNiLQSS9dnc9>



# SCOIL ÍDE NEWS

[www.scoilide.ie](http://www.scoilide.ie)

061 345495

May 2021

## **WELL DONE**

ACE awards are given to pupils who excel in school life through Attainment, Community Spirit or Effort.

Well done to our April ACEs.

**VI: Nolan: Abby Sweeney**

**VI: Heaney: Aoibhinn McNamara**

**VI: Boland: Daniel G O' Connell**

## **Follow us on Twitter**

**@ScoilIde**

## **Final Assembly**

The Final Assembly for our 6th Class pupils will take place on June 25th.

Unfortunately, family members will not be able to attend in person due to COVID-19 restrictions. The assembly will be available to view online.

## **Payments**

Thanks to all those who have contributed to the maintenance Fund. Your support is greatly appreciated. This money goes a long way in helping us provide the best educational opportunities for your children.

Please use the Aladdin system if you wish to make a payment of any sort.

## **Assistance with school books**

Some limited assistance will be available for the purchase of school books for families who are experiencing financial difficulties. If you wish to apply for this assistance, please contact Elaine at [eflannery@scoilide.ie](mailto:eflannery@scoilide.ie) with your details.

## **COVID-19**

Every week it is heartening to hear that more and more people that we know are receiving their vaccinations. Society is also gradually re-opening and a somewhat "normal" summer is on the cards. However, COVID-19 is still present in the local community and it would be naive to think that COVID has not entered the school since March. Hospitalisations are down and thankfully deaths from COVID are down but case numbers are not down and have remained stubbornly high. As a school, **we will** still have to deal with a case or cases exactly like we did in October **if we have** a confirmed case in the school in the weeks ahead. Classes and associated staff members will be sent home and they will have to restrict movement at best or possibly isolate. Please continue to be vigilant. If a child is unwell, keep them at home until they are better. Thanks for what you have done thus far and please stick with it.

## **Calling to the school**

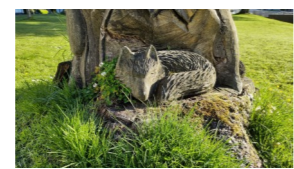
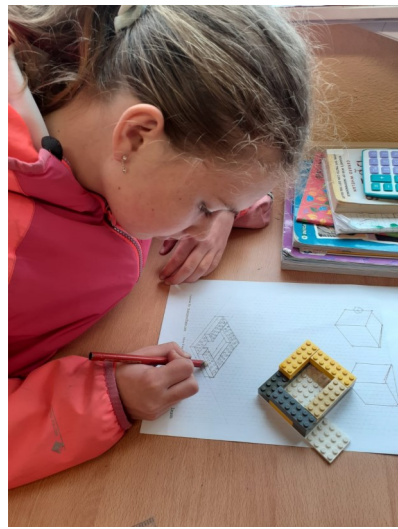
If you need to drop in something for children during the school day, leave it in the box outside the school reception. Parents should not enter school grounds or buildings unless arranged through the school office.

## **Face Masks**

We ask all those who are dropping children off in the mornings and collecting children in the evenings to continue to wear masks. We also ask that parents / guardians do not congregate outside the school at drop off and home time.

## **Standardised Tests**

Every class from 1st class to 6th class will sit standardised tests in English and Mathematics before the middle of June. We use these tests to provide useful information to inform and guide planning for future teaching and learning. The prolonged school closure may have an impact on how children do in these tests. There is no need for students to revise for these tests and it is important to note that as one of many forms of assessment we use in school they only provide a snapshot in time and do not accurately reflect all aspects of a pupil's learning and development. Parents can discuss the results with class teachers and they will be recorded in the end of year report.



## Scoil Íde Pollinator Plan

As we outlined in our last newsletter, bees need flowers and safe places to live right across Ireland, not just in the countryside. Here are some of the things we will do to play our part:

- \* We won't cut the grass in certain areas as often so that flowers can grow amongst the long grass. Short grass looks neat and tidy but it doesn't provide anything for bees to eat – we know they need flowers. This picture is from the front lawn outside the Senior Building on the Corbally Road.
- \* We will plant flowers that bees love. This will provide them with healthy and nutritious pollen and nectar.
- \* We will use fewer and less harmful weed and pest killing chemicals that can make bees sick.
- \* We will teach the children about pollinators & their importance.



## Duathlon 2021

Training is well underway for the upcoming Junior Duathlon. The sixth classes have had plenty of cycling and running training sessions over the last few weeks, readying themselves for the big event.

This year's duathlon will be a cross country affair, taking place in the Bishop's Field and woods next to the school. The children will be tasked with the challenge of a 3000m cycle followed by a 1500m run.

The Junior Duathlon dates have been set for June 17th and 18th and we are all looking forward to it with great anticipation. This event is in its 8th year.

Unfortunately, last year's event was cancelled due to COVID-19 restrictions. We are also sorry that parents and guardians will not be able to attend but we know that you will be supporting the children from afar.



## Reeling in the Years: May 2000

Looking back at one of the headlines in our newsletter this month 21 years ago.

## BUILDING IMPROVEMENTS

Work is almost fully completed on the Senior Infant Block after the major refurbishment that took place during Easter. The asbestos ceiling tiles were removed by a specialist company, the windows were replaced and the toilets and lobby areas refurbished. Painting work is nearing completion and the outside of Rooms 1, 2 and 3 will be painted a buttermilk colour in

the near future. The work done on this block since last Autumn will have cost in the region of £80,000.

Work scheduled for the near future includes the resurfacing of the basketball court with the replacement of the basketball stands. The lawn area beside the Four Seasons Garden in front of the Senior School is due for seeding shortly. The pergolas in the centre of the garden will

be planted with Solanum, Honey-suckle and Clematis.

